



WHERE REPTILES RULE®

BASIC DESERT KIT CARE GUIDE

WHAT YOU NEED TO KNOW TO GET
STARTED IN CARING FOR A DESERT REPTILE.

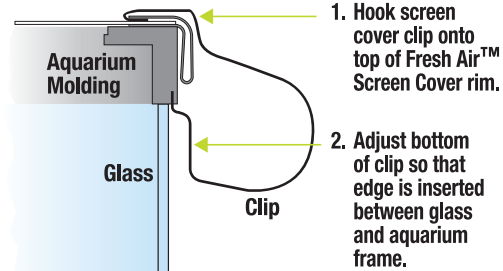




QUICK AND EASY SETUP

- 1. Terrarium Liner:** Unroll and place the included Terrarium Liner on the bottom of the terrarium, making it as flat as possible. You may trim some of the length with a scissors if it is too long.
- 2. Humidity and Temperature Gauge:** Attach suction cup to the hole in the back of the Humidity and Temperature Gauge and affix the suction cup to the back of the terrarium. Generally, placement in the center, closer to the bottom of the terrarium, will result in more accurate readings.
- 3. Screen Cover and Screen Clips:** Remove all plastic and tags from screen cover and place on top of terrarium. Install screen clips by following the directions above.

SCREEN CLIP INSTALLATION

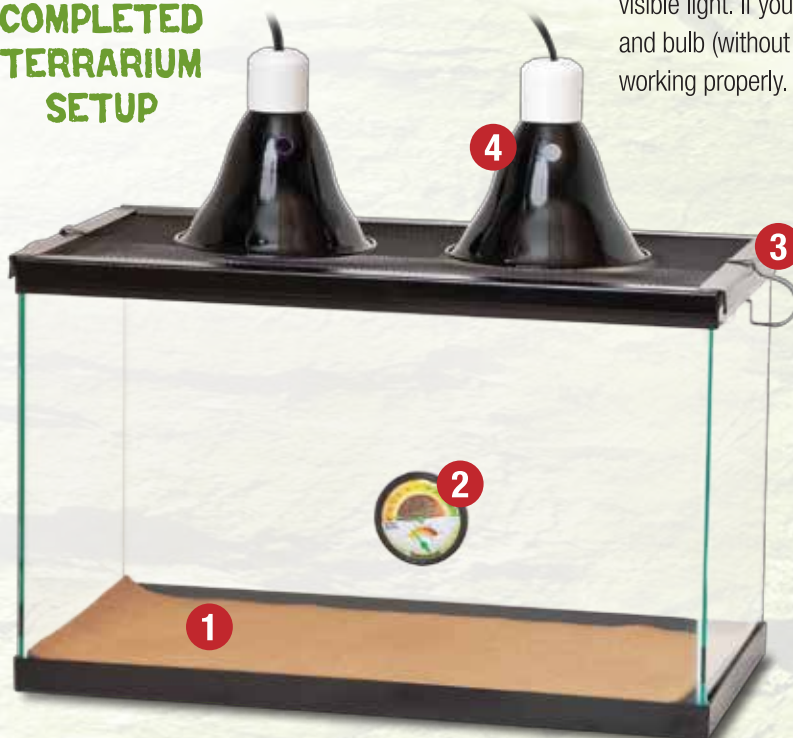


4. Reflector Dome and Light Bulbs:

Screw bulbs into Reflector Domes. Place the Day White spot on top of the screen cover on one side of the terrarium and the Night Black Heat bulb on the opposite side. Plug in Reflector Domes and flip switch to illuminate.

NOTE: Night Black Heat bulb will not emit much visible light. If you feel heat around the dome and bulb (without touching them), the lamp is working properly.

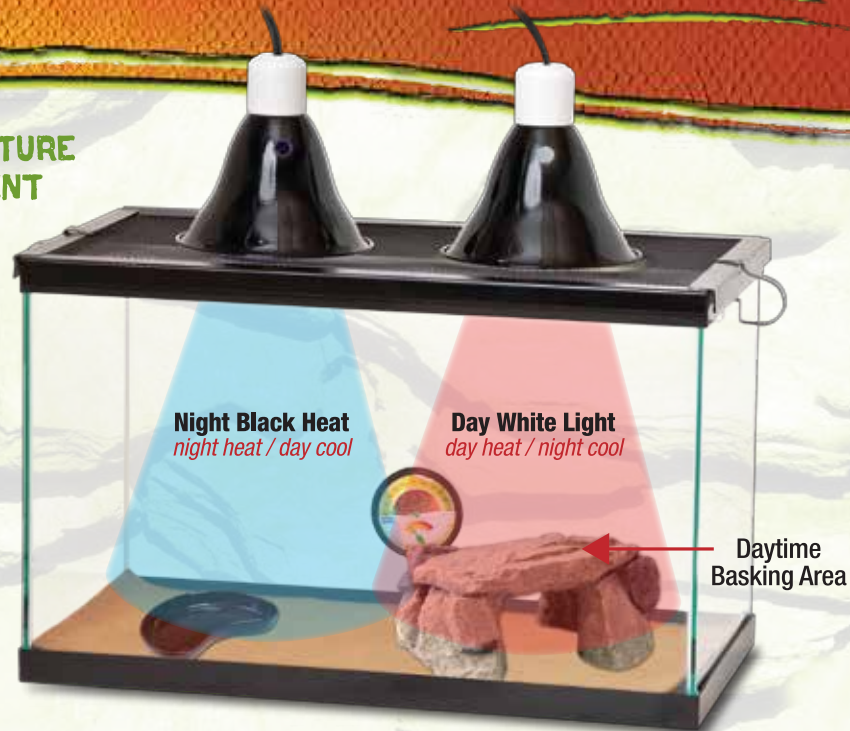
COMPLETED TERRARIUM SETUP



Visit zilla-rules.com for ideas on ways to spruce up your terrarium. Décor items such as Rock Dens or Terrarium Plants will not only add a little pizzazz to the environment, it will also make your reptile feel more at home.

WHERE REPTILES RULE®

TEMPERATURE GRADIENT



BASIC CARE TIPS

- **Become an expert on your specific type of reptile.** Get a book about your reptile, talk to a trusted pet store associate or visit zilla-rules.com to get all the information necessary to care for your new pet.
- **Create a temperature gradient in the terrarium.** By following the setup instructions on the previous page, you are creating a basic temperature gradient. A temperature gradient means that different parts of the terrarium are at different temperatures during the day and night. This way, if your animal is too hot, it can move to a cooler area, and vice versa. **Keep your Day White spot on during the day and the Night Black Heat bulb off. Then do the opposite at night.** The diagram above shows how the temperature gradient works.
- **Does your reptile require a source of Ultraviolet (UV) light?** If so, you may need to purchase another light fixture and bulb that provides the necessary UV light, such as a Zilla Slimline Desert 50 Fixture.
- **Does your reptile require additional heat?** Then adding an additional Reflector Dome with a Ceramic Heat Emitter may be the answer. Another great way to retain heat inside the terrarium is to add bedding, like Zilla Ground English Walnut Shells or Calcium Sand. For the first few days of keeping your new pet, **move the Humidity and Temperature Gauge to various parts of the terrarium to make sure the temperature is within the recommended range for your specific type of reptile.**
- **Provide enough nutrients for your reptile through a varied diet and supplements.** Add additional nutrients to fruits and vegetables by spraying on Zilla Calcium and Vitamin Supplements. Or pack live insects with nutrients with Zilla Gut Load Cricket and Insect Food.

SIMPLE CLEANING AND MAINTENANCE

- **Clean the Terrarium Liner twice per week**

by removing it from the terrarium and rinsing thoroughly with cold water. Allow to air dry before returning to the terrarium.

- **Remove perishable food and/or dead insects from the terrarium daily.**

To make this job even easier, purchase a Terrarium Dish that will hold food and is easy to clean with a little soap and water.

- **Replace UV bulbs every six months.**

The amount of UV rays a bulb emits will decline slowly each time it is turned on. The average UV bulb becomes ineffective after six months.



A product of Central Aquatics™
(Division of Central Garden & Pet)

Franklin, WI 53132

888.255.4527 zilla-rules.com

Zilla® and Where Reptiles Rule® are registered trademarks of Central Garden & Pet

©2010 Central Garden & Pet

REPTILE SPECIES GUIDE

REPTILE	DIET	HABITAT	UVB LIGHTING	BASKING TEMP. RANGE	NIGHT TEMP. GRADIENT	HUMIDITY RANGE
*RUSSIAN TORTOISES	Herbivore	Arid Plains, Rocky Slopes	Desert 50	90-95F	cool 70-75F warm	40-60%
*DESERT KING SNAKES	Carnivore	Semi-Desert	Daylight Full-Spectrum	85-90F	cool 70-75F warm	40-60%
KENYAN SAND BOA	Carnivore	Desert	Daylight Full-Spectrum	90-95F	cool 75-80F warm	60-80%
LEOPARD GECKOS	Insectivore	Rocky, Semi-Desert	Daylight Full-Spectrum	85-95F	cool 70-75F warm	40-60%
AFRICAN FAT-TAIL GECKO	Insectivore	Savannah, Arid Forest	Daylight Full-Spectrum	85-95F	cool 70-75F warm	40-60%
*BEARDED DRAGONS	Omnivore	Arid Woodlands, Semi-Desert	Desert 50	100-110F	cool 70-75F warm	25-40%
*UROMASTYX	Herbivore	Rocky, Desert	Desert 50	100-120F	cool 70-75F warm	10-30%
*COLLARED LIZARD	Insectivore	Desert, Grassland	Desert 50	85-95F	cool 70-75F warm	40-60%
*HORNED LIZARD	Insectivore	Arid Woodlands, Semi-Desert	Desert 50	85-95F	cool 70-75F warm	40-60%

○ Always provide a temperature gradient for the reptile in which the animal can bask in the heat and then move to a hiding den on the other side of the living area to cool down.

○ *Will need a larger terrarium as the animal matures for long term housing.

○ Please check with a sales associate for additional help in selecting the proper environment and care for your reptiles.

○ This kit is not recommended for Iguana, Monitors or other large lizard species.