



## TIP: Creating a Temperature Gradient

### SNAKE KIT Setup Guide



The setup instructions were designed to incorporate a temperature gradient. A temperature gradient means that different sides of the terrarium are at different temperatures during the day and night so that if your reptile gets too hot, it can move to a cooler area of the terrarium.

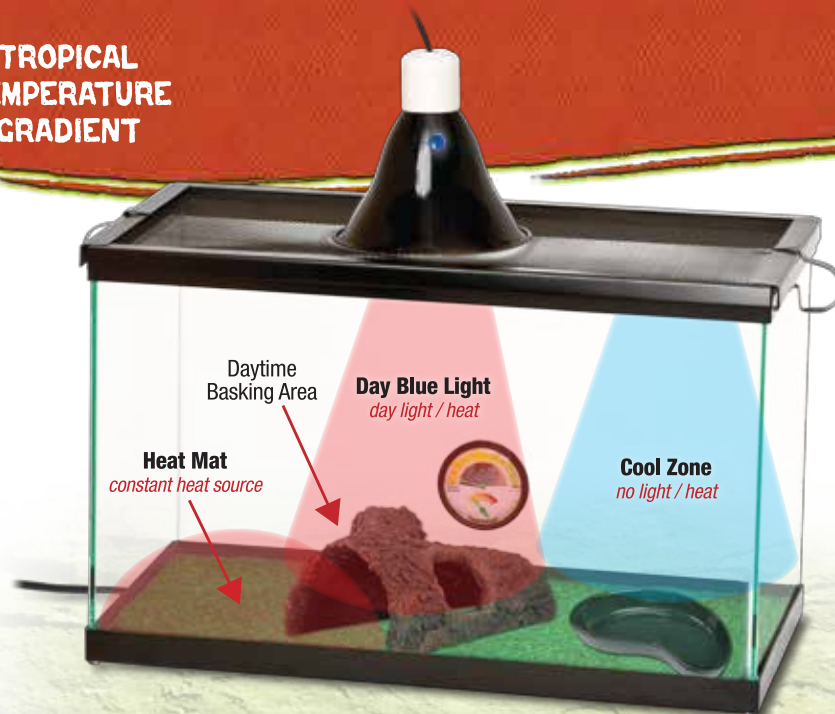
To achieve this, turn the daylight/heat and UVB lamps on during the day, and keep the night heat lamp off. At night, only the night heat lamp should be on.

If you have a heat mat, it should be underneath the side with the day light.

The diagram on the right shows how a basic temperature gradient works.



### TROPICAL TEMPERATURE GRADIENT



## 1. place terrarium on **Strong, Stable Surface**



- Place terrarium evenly on a level surface so that all sides of terrarium are supported.
- Surface should be able to easily support more than 150 lbs.





## 2. add Bedding



**ZILLA LIZARD LITTER IS RECOMMENDED**

- Carefully pour bedding into middle of terrarium.
- Spread evenly around terrarium bottom.
- Bedding depth should measure about 1" - 3" from the bottom.



## 3. add Décor



**ADD ADDITIONAL DESERT DÉCOR**

- Place rock den and Lizard Lagoon on opposite ends of terrarium.
- Suction temperature/humidity gauge to back wall of terrarium.
- Add water to bowl.



## 4. add Screen Top



**BEND SLIGHTLY TO INSERT FOR LOCK**

- Be sure hinged feeding door is properly locked and secured.
- Slide entire screen into grooves in frame until a "click" is heard to indicate that the screen top is locked securely in place.



## 5. add Light and Heat Lamps



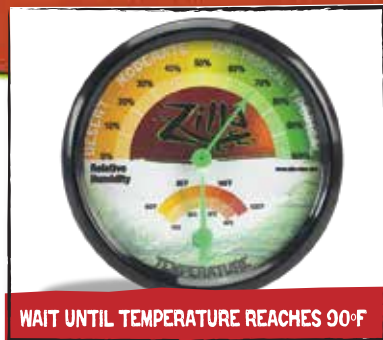
**REFER TO PRODUCT MANUAL TO SAFELY INSERT BULBS INTO FIXTURES**

- Place Halogen Mini Dome with Day Blue bulb over rock den.
- Place Halogen Mini Dome with red heat bulb on opposite side of terrarium.
- Turn on day or night heat lamp as recommended.





## 6. add Snake



- Remove entire screen top from enclosure.
- Carefully place snake inside open enclosure onto bedding.
- Slide entire screen top into place. Frame will "click"; locking into place. Make sure feeding door is locked and secured.
- Place light and heat lamps on screen top as directed.



*additional purchase considerations*

## HEAT MAT TERRARIUM HEATER

Provides an energy-efficient external heat source to help reptiles thermo-regulate for daily activity, appetite and metabolism. And its easy-to-use adhesive mounting provides optimal heat transfer.

*Available in Mini, Small, Medium and Large.*



## SHED-EASE™ Reptile Bath

Zilla® Shed-Ease makes the reptile shedding process easier. Formulated with aloe and other emollients that softens old skin and adds healthy luster to new.



## REPLACEMENT MINI HALOGEN BULBS



*Available in Day White, Day Blue and Night Red in 25 and 50 Watts*